

Wakefield Run: Stream Restoration Project

Current Conditions

Wakefield Run is actively eroding and is a source of sediment that damages downstream natural resources. Erosion is causing damage to existing public assets within the Wakefield Run stream corridor, including a sanitary manhole, trail crossing, bridge and natural gas line.



1 inch = 600 feet

Wakefield Run
Stream Restoration Project
Location Map

Prepared by:
NVSWCD



Plan Design



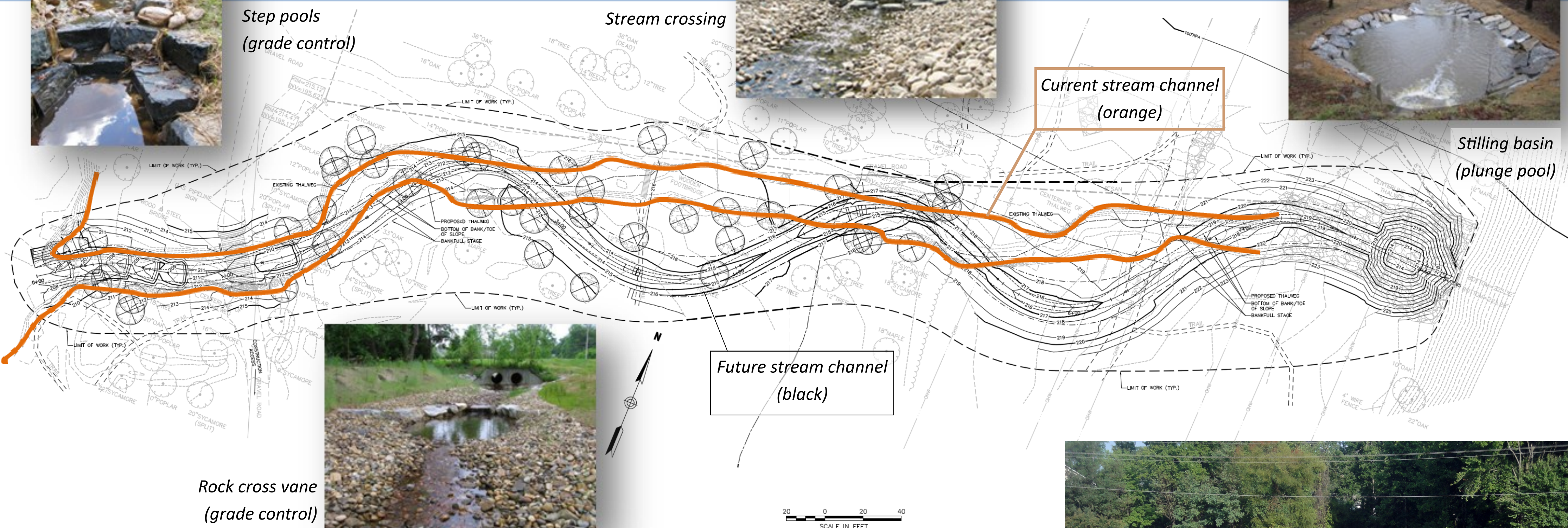
Step pools
(grade control)



Stream crossing



Stilling basin
(plunge pool)

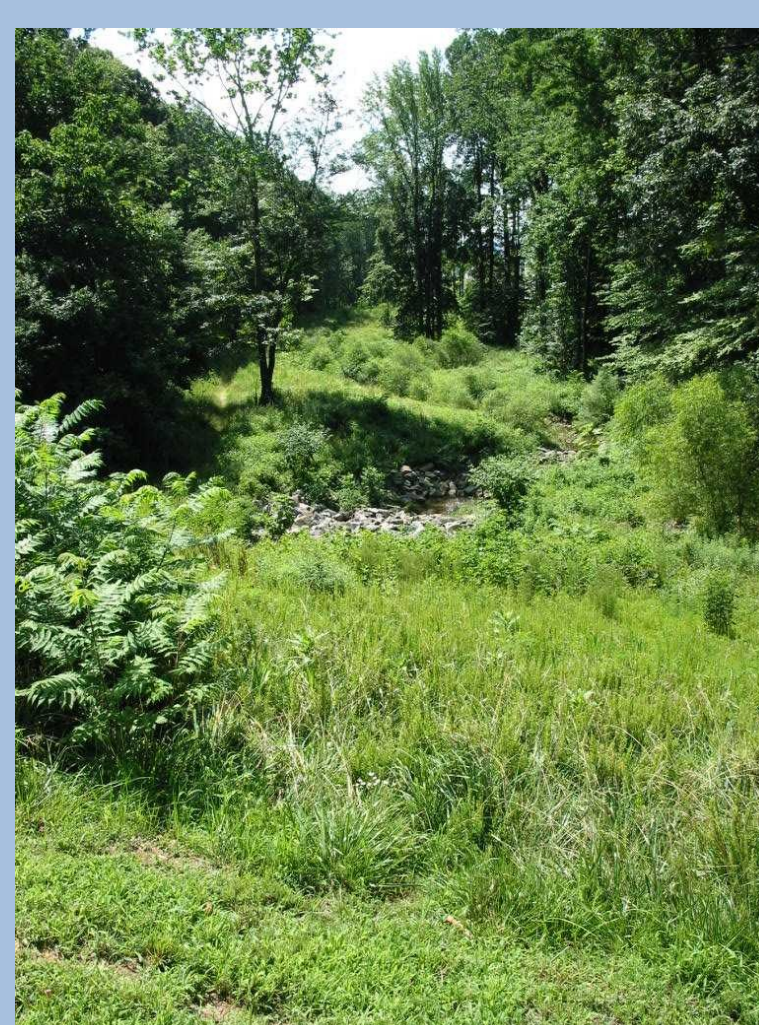


Current stream channel
(orange)

Future stream channel
(black)

Rock cross vane
(grade control)

Stream restoration is the process of converting unstable, altered, and degraded stream corridors, riparian zones and flood-prone areas to natural and stable conditions.



Project Partners include Northern Virginia Soil & Water Conservation District, Fairfax County DPWES - Stormwater Planning Division, Fairfax County Park Authority, Dominion Virginia Power, Braddock District Supervisor, VDOT/Fluor Lane, Friends of Accotink Creek, Fairfax Trails & Streams, Mid-Atlantic Off-Road Enthusiasts, Earth Sangha